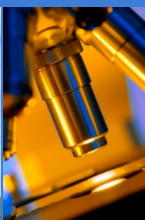


Detection of enteroviruses in tissue samples of cadaveric organ donors with type 1 diabetes

Heikki Hyöty, Maarit Oikarinen, et al.

University of Tampere, Finland

Miami, January 16, 2012



Development of EV screening methods

- EV protein by immunohistochemistry (IHC)
 - 8 antibodies optimized
 - formalin-fixed and frozen sections
- EV genome by *in situ* hybridization (ISH)
 - formalin-fixed sections

Validation of the assays

- EV-infected cells
- Intestinal and pancreas tissue from EV-infected mice
- Pancreas from a patient who died of EV infection
- Large panel of human tissues from non-diabetic organ donors

Results from nPOD

- EV screening panel:
 - EV protein (IHC, anti-VP1 clone 5-D8/1)
 - EV genome (ISH, pan-EV probe)
- Formalin-fixed paraffin-embedded sections:
 - 18 T1D patients: 21 pancreas, 15 spleen, 11 duodenum, 2 PLN
 - 3 auto-ab+ donors: 3 pancreas, 3 spleen, 2 duodenum, 1 PLN
 - 23 controls: 24 pancreas, 17 spleen, 1 duodenum

Proportion of donors positive for EV genome (ISH)

	T1D	Aab+	Controls
Pancreas	30 % (N=20)	33 % (N=3)	4 % (N=24)
Spleen	53 % (N=15)	33 % (N=3)	18 % (N=17)
Duodenum	40 % (N=10)	50 % (N=2)	0 % (N=1)
PLN	100 % (N=2)	100 % (N=1)	na
Total	43 %	44%	10 %

Proportion of donors positive for EV protein (IHC)

	T1D	Aab+	Controls
Pancreas	33 % (N=21)	0 % (N=3)	5 % (N=22)
Spleen	20 % (N=15)	50 % (N=2)	6 % (N=16)
Duodenum	30 % (N=10)	50 % (N=2)	0 % (N=1)
PLN	50 % (N=2)	100 % (N=1)	na
Total	29 %	38 %	5 %

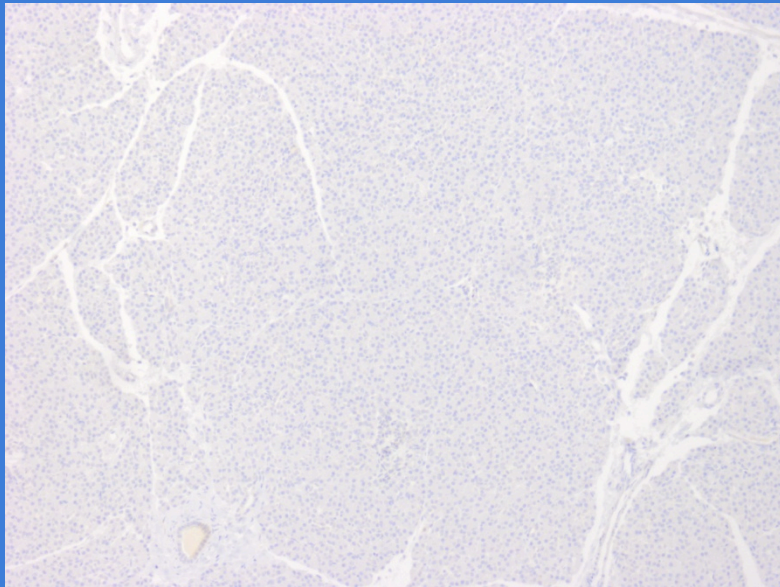
Correlation between EV positivity in the pancreas and spleen

Either viral genome or protein

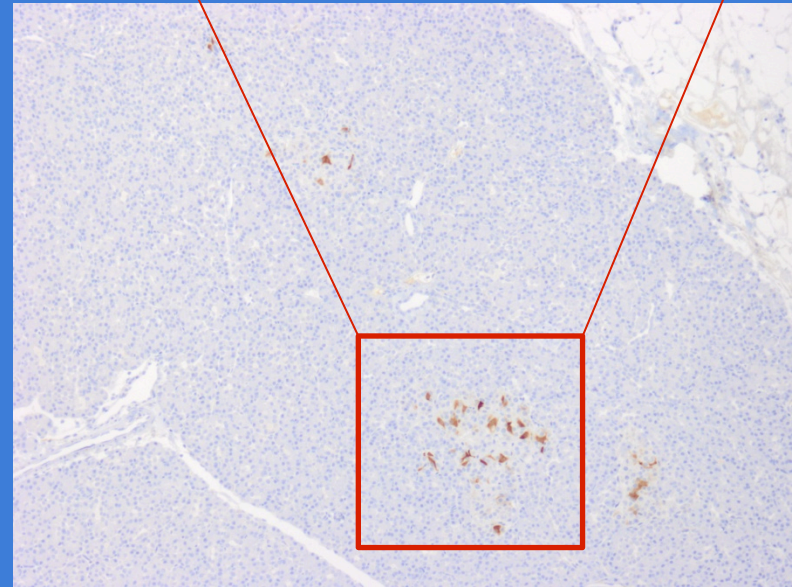
		Pancreas	
		positive	negative
Spleen	positive	8	8
	negative	2	17

P=0,012

EV VP1 in the pancreas of case #6052

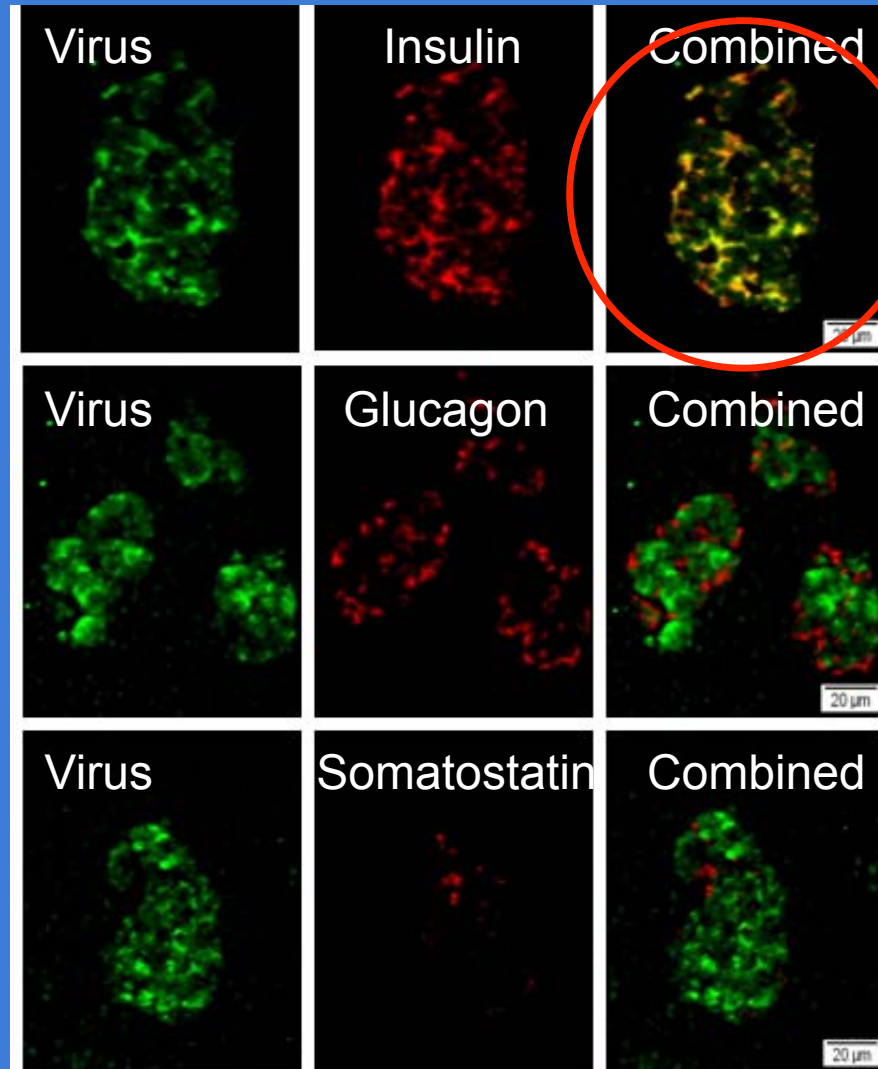


Head



Tail

Double staining with EV and hormone antibodies



Conclusions

- EV protein and genome detected in multiple organs of T1D patients more frequently than in controls
- EV signal showed positive correlation between different organs
- EV positivity can vary between different parts of each pancreas
- Further studies:
 - analyses of multiple tissues from all nPOD donors by these assays as a primary screening of the EV status
 - analyses of different parts of the pancreas
 - selected cases analysed by PCR + sequencing

nPOD team in Tampere

Sisko Tauriainen

Maarit Oikarinen

Sami Oikarinen

Immo Rantala

Teemu Honkanen

Eeva Tolvanen

Heikki Hyöty

...and the nPOD study group

