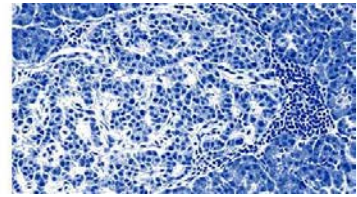


nPOD
Network for Pancreatic Organ
Donors with Diabetes



nPOD Webinar:

Using pancreas tissue slices for in situ studies of human islet cell biology

When: Wednesday, April 8th from 11am-12noon (US Eastern Daylight Time)

Where: WebEx

[Join WebEx meeting](#)

Meeting number: 730 532 225

Meeting password: diabetes

Join by phone **1-650-479-3208** Call-in toll number (US/Canada)

Access code: 730 532 225

Speaker: Dr. [Stephan Speier](#)



Information: Pancreas tissue slices are 150-200 μ m thick sections of living pancreatic tissue obtained from animals or humans. They enable functional analysis of intact islets in their endogenous environment and 3D morphological assessment of the endocrine and exocrine pancreas. Therefore, this approach is particularly interesting for studying autoimmune diabetes

Reference: [Marciniak et al, Nat Protoc, 2014, 9\(12\):2809-22](#)
[Marciniak et al, PLoS One. 2013 Nov 4;8\(11\):e78706](#)